



Cam Lock Cold Storage Panels

25
yıl
years
ans

www.cantekgroup.com



The sandwich panels, which started to be produced in the 1960s in the world, have a great use in today's industry thanks to their lightness, aesthetic appearance, ease of installation, cheap and unique insulation features.

Production of cam lock cold storage panels started in 1990 in Turkey. This application, which had a high cost in the beginning, became a preference due to the reduced cost of metal and raw materials, advanced isolation ability, fast and easy installation.

Cold Storage Warehouses



Cold storage warehouses, benefiting from a closed isolated environment, allow the products to be stored in suitable hygienic conditions with long-lasting, and high quality conservation. They are designed from specific materials and include appropriate preservation techniques according to the properties of the product to be stored.

Cantek Group has been manufacturing cam lock cold storage panels for more than 25 years in a range varying from 60 mm up to 200 mm of thickness and which the insulation capacity is conform with the world standards.

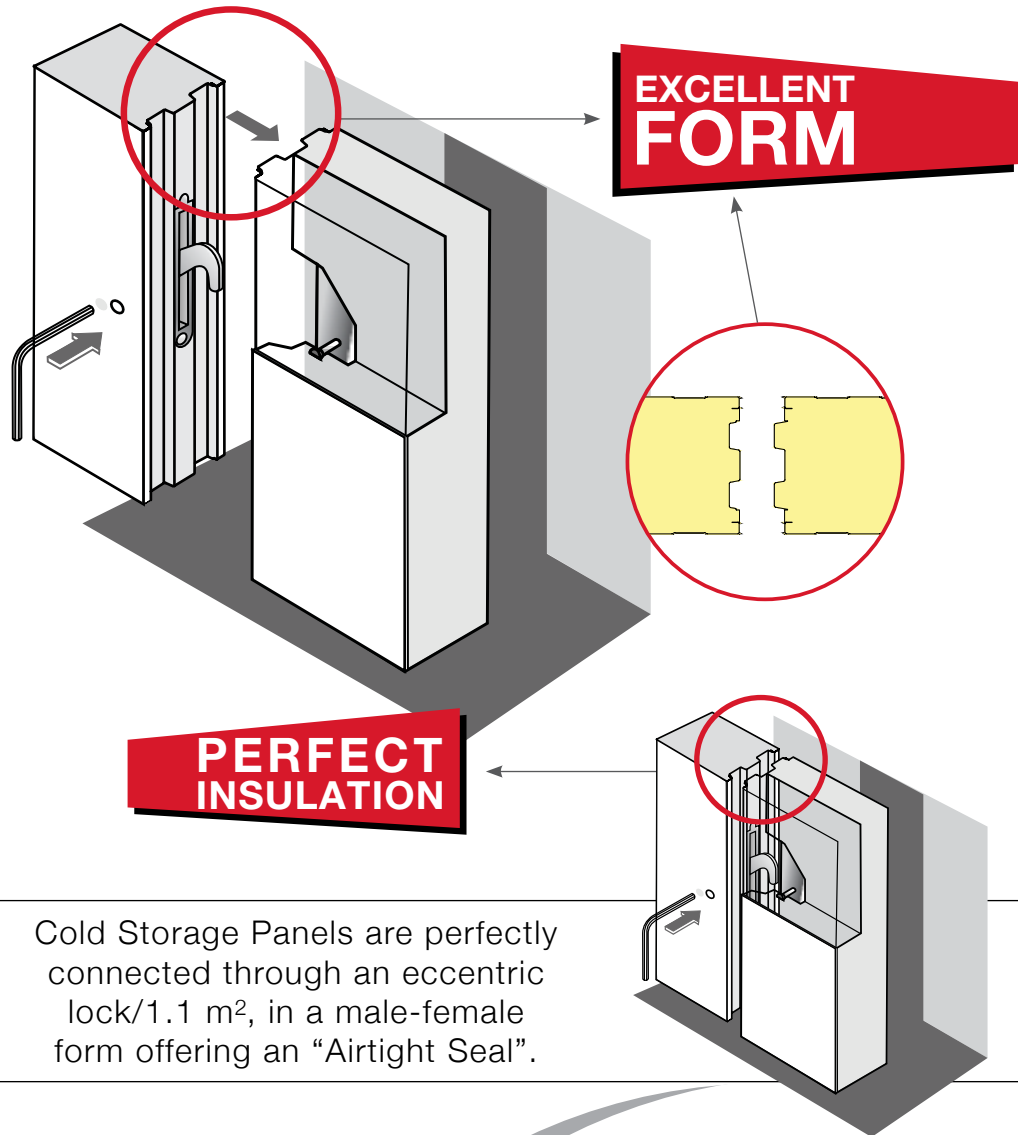
Being one of the oldest panel manufacturer in Turkey, we offer high quality and competitive price to gain a total customer satisfaction.

panel

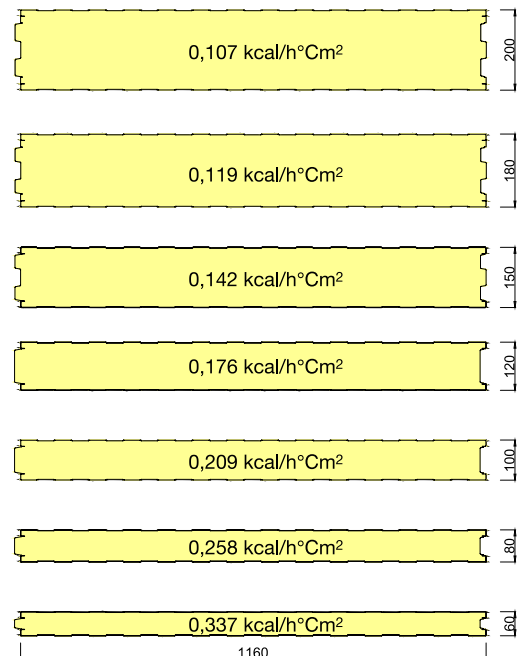


PANEL

LOCK SYSTEMS



The locks are
"CE" certified



panel



A sandwich can
be so isolated
and healthy.



Cantek

Cam Lock Cold Storage Panels

Thanks to the eccentric locking structure, the lockable panel pulls itself and provides excellent sealing with perfect contact.



- * Polyurethane compatible
- * Special locking surface
- * Robust adherence system



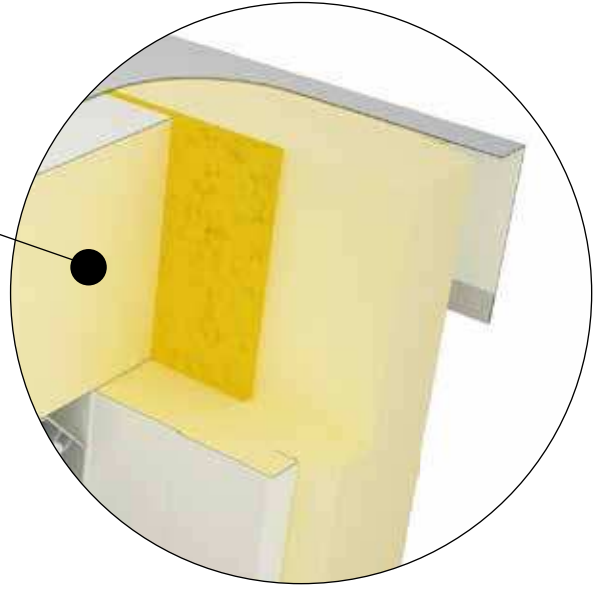
ECCENTRIC LOCK SYSTEM



panel



POLYURETHANE FOAM



POLYURETHANE TECHNICAL INFORMATION	VALUE	UNIT
Recommended Use Temperature	-40 ~ +80	°C
Closed Cell Content (%)	91 - 95 %	-
Heat Conductivity Coefficient (A)	0,020 - 0,022	W / mk
Bending Strength	0,24 - 0,30	N / mm2
Water Absorption (after 168 hours)	0,05 - 0,20	Volume %
Steam Diffusion Resistance	55 - 60	-
Pressure Resistance - %10 (extended)	0,15 - 0,20	N / mm2
Density (kg/m3)	40 (± 2)	EN 1602
Closed Cell Ratio (%)	95	EN 14509
Dimensional Stability	Level DS(TH) 11	EN 13165



Polyurethane which is a rigid foam, is formed by reacting isocyanate with polyol. Its closed cell structure is formed by special production techniques and high pressure mixing. This provides higher heat insulation.

The polyurethane that can be produced at the desired density should have a density of $40 \pm 2 \text{ kg/m}^3$ so that the insulation coefficient can be at the proper value. Having a high dimensional stability, it has no water absorption feature.

panel

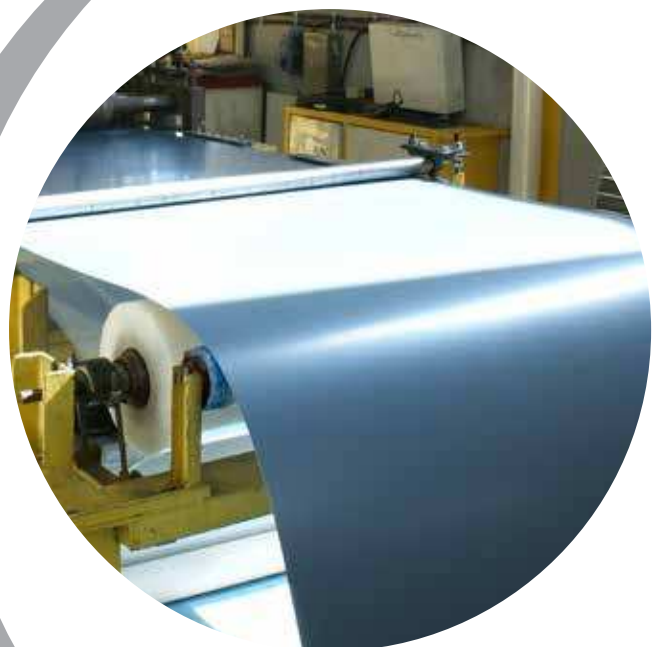




Cantek Group,
Exports cam lock cold
storage panels of unique
insulation to more than 45
countries.



EXPERIENCE



panel





Cantek Group

13.000
successfully achieved projects

EXPERIENCE

panel





LEADER IN THE SECTOR

With a daily production capacity of **2.500 m²**

“In Cam Lock Industrial Panel”

EXPERIENCE



panel





60.000 children/year

70.000 foreign guests/year come from all over the world to visit us



We built Snow World in Antalya Aquarium in 2012 and it is now snowing in Antalya **365 days per year.**

Snow World, designed by our Turkish engineers, offers a dreamy atmosphere thanks to the perfect isolation provided by **Cantek cam lock panels** even during summer days when the weather is +40 °C.

panel



A full-page background image featuring a diver in a blue wetsuit and fins, positioned in the center of a dark, irregularly shaped opening that resembles a cave or a large hole. The diver is facing away from the viewer, looking towards a bright, glowing light source at the top of the opening. The light creates a strong contrast, illuminating the diver and the surrounding rock walls, which appear textured and rugged. The overall color palette is dominated by deep blues and blacks, with the bright light source providing a focal point of high contrast.

“use your energy wisely”



CANTEK®
GROUP

Antalya Organize Sanayi Bölgesi
2.Kısım 21. Cd. No: 1 Antalya/Türkiye

tel +90 242 258 17 00 (10 line)

fax +90 242 258 17 09

www.cantekgroup.com

